



lawn fawn

Snail Mail

Pattern for Embroidery Hoop Lawn Cuts
by Chari Moss

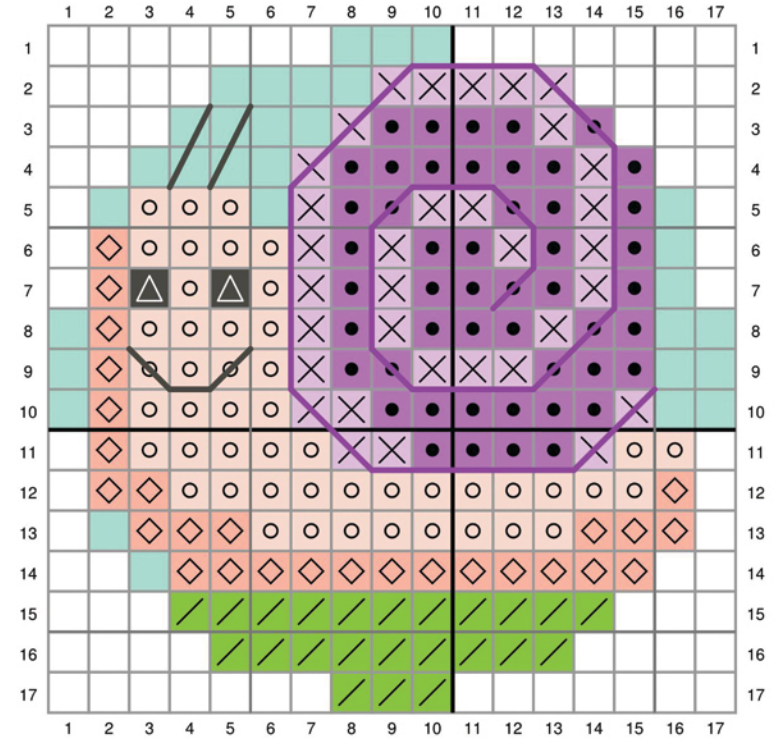


created for lawn fawn by chari moss

Card Supplies Used:

Embroidery Hoop LF3093
Chit Chat LF669
Chit Chat Lawn Cuts LF670
Simply Sentiments LF1601
Happy Mushrooms LF3315
Hearts and Stars Skinny Tag LF2572
Grassy Border LF613
Knock On Wood - Coffee Table paper LF1512
Speckled Eggshell Cardstock LF2086
Cilantro Cardstock LF1372
Algae Cardstock LF3337
Guava Cardstock LF1117
Mermaid Cardstock LF1121
Narwhal Cardstock LF1272

Storm Cloud Cardstock LF1273
Narwhal Ink LF1274
Black Licorice Ink LF868
Star Dust Stickers LF1007



- No stitch
- DMC 704 - Bright Chartreuse
- DMC 844 - Ultra Dark Beaver Gray - Backstitch with 3 strands
- DMC 225 - Ultra Very Light Shell Pink
- DMC 353 - Peach
- DMC 211 - Light Lavender
- DMC 209 - Dark Lavender
- DMC 208 - Very Dark Lavender - Backstitch with 3 strands
- DMC 964 - Light Seagreen or Mermaid Cardstock