



AHOY!

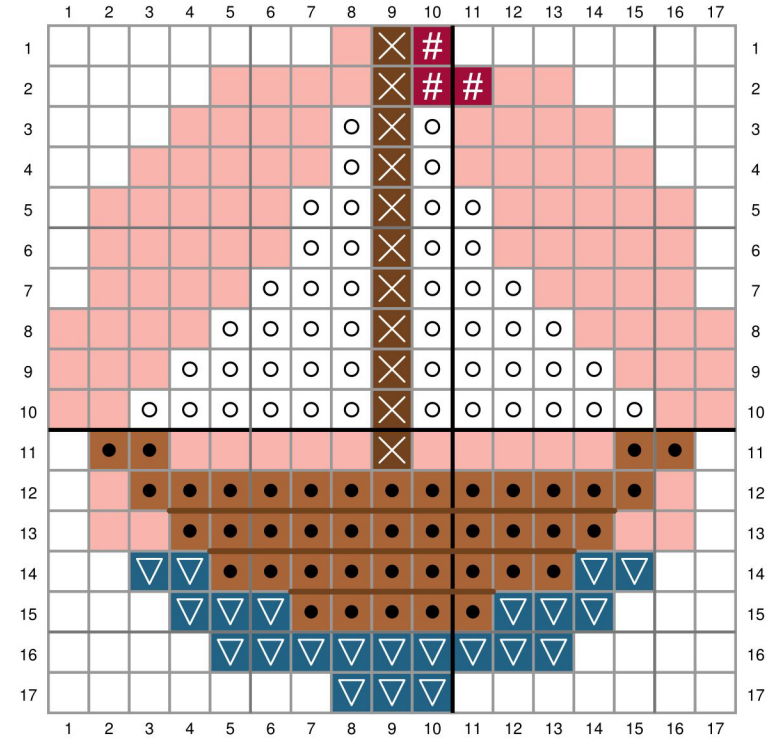
Pattern for Embroidery Hoop Lawn Cuts
by Chari Moss



created for lawn fawn by chari moss

Card Supplies Used:

- Embroidery Hoop LF3093
- Embroidery Hoop Window and Frame Add-On LF3443
- All the Party Hats LF2872
- Stitched Sentiment Banners LF3442
- Stitched Wave Borders LF1710
- Outside In Stitched Rectangle Stackables LF1442
- Stitched Cloud Backdrop: Landscape LF1423
- Spring Showers LF657
- Ballet Slippers Cardstock LF1444
- Pint-Sized Patterns Summertime Petite Paper Pack LF3406
- Distress Ink - Abandoned Coral
- Gansai Tambi Starry Colors LF1850
- Star Dust Stickles LF1007
- Iridescent Sequins



- No stitch
- # DMC 304 - Medium Red
- DMC B5200 - Snow White
- DMC 435 - Very Light Brown
- ▽ DMC 517 - Dark Wedgewood
- × DMC 433 - Medium Brown - Backstitch with 3 strands
- DMC 761 - Light Salmon or Ballet Slippers Cardstock