



# Sweet Treat

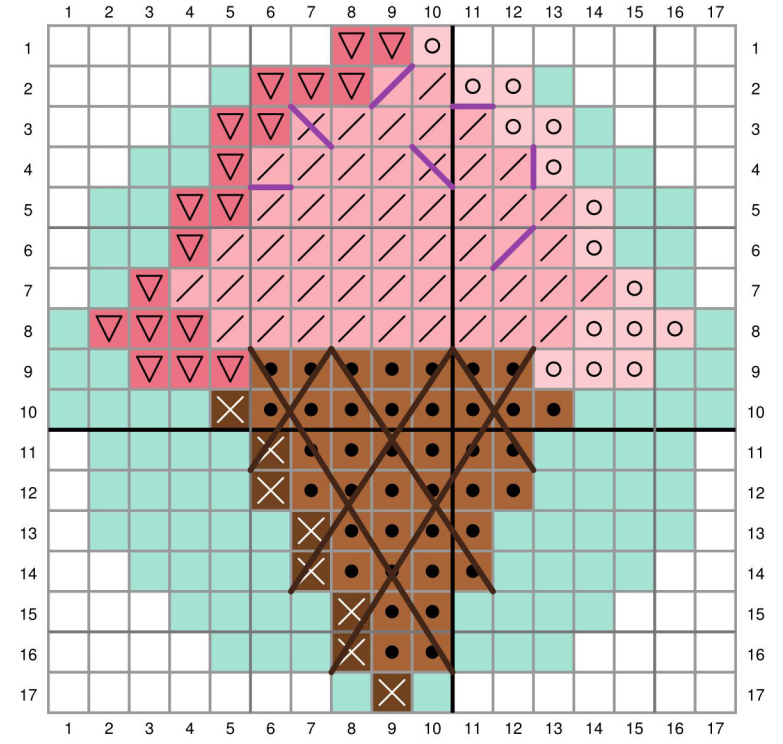
Pattern for Embroidery Hoop Lawn Cuts  
by Chari Moss



created for lawn fawn by chari moss

**Card Supplies Used:**

- Embroidery Hoop LF3093
- Embroidery Hoop Window and Frame Add-on LF3443
- Treat Cart LF3408
- Yappy Birthday LF3158
- Sripty Sweet LF1268
- Hearts and Stars Skinny Tag LF2572
- Outside In Stitched Rectangle Stackables LF1442
- Pint-sized Patterns Summertime - Watermelon Slushy LF3400
- Pint-sized Patterns Summertime - Frozen Lemonade LF3401
- Guava Cardstock LF1117
- Mermaid Cardstock LF1121
- Raspberry Cardstock LF1374
- Sugarplum Cardstock LF1124
- Sparkle Cardstock - Pixie Dust LF1750
- Sunflower Ink LF862
- Black Licorice Ink LF868



- No stitch
- DMC 963 - Ultra Very Light Dusty Rose
- DMC 3716 - Very Light Rose
- DMC 962 - Medium Dusty Rose
- DMC 435 - Very Light Brown
- DMC 433 - Medium Brown
- DMC 938 - Ultra Dark Coffee Brown - Backstitch with 3 strands
- DMC 208 - Very Dark Lavender - Backstitch with 3 strands
- DMC 964 - Light Seagreen or Mermaid Cardstock