



lawn fawn

Bitty Birdie

Pattern for Embroidery Hoop Lawn Cuts
by Chari Moss



created for lawn fawn by chari moss

Card Supplies Used:

Embroidery Hoop LF3093

Thanks Thanks Thanks LF2405

Thanks Thanks Thanks Lawn Cuts LF2406

Fancy Wavy Banners LF1923

Stitched Windy Backdrop LF1425

Hearts and Stars Skinny Tag LF2572

Christmas Garland LF2688

Outside In Stitched Rectangle Stackables LF1442

Textured Canvas Cardstock - Brown LF2850

Spiffy Speckles - Ripe Banana paper LF1863

Vanilla Malt Cardstock LF1576

Kraft Cardstock LF1747

Mermaid Cardstock LF1121

Peacock Cardstock LF1122

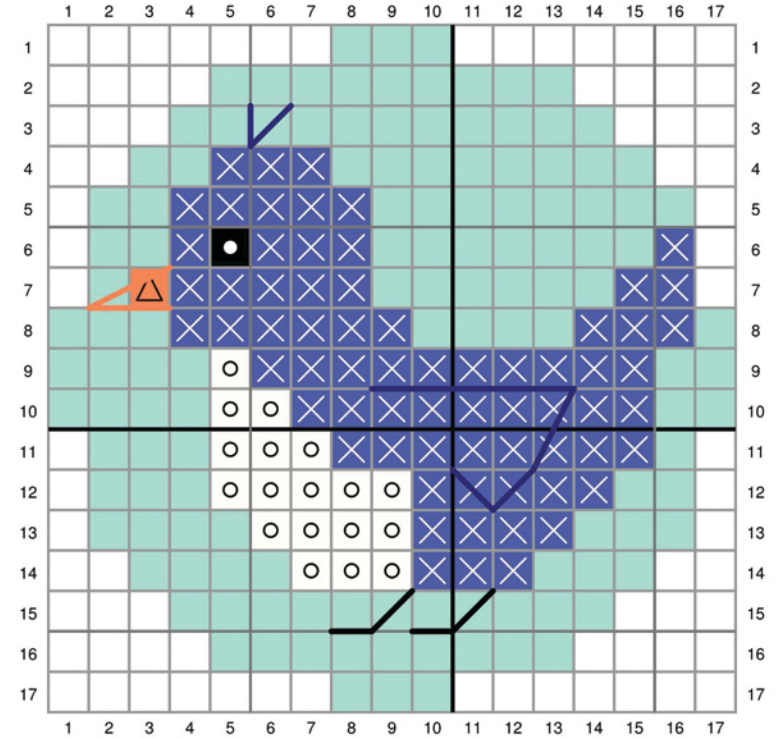
Storm Cloud Cardstock LF1273

Guava Cardstock LF1117

Black Licorice Ink LF868

Wild Honey Distress Ink

Natural Jute Twine



-  No stitch
-  DMC 798 - Dark Delft Blue
-  DMC 3865 - Winter White
-  DMC 310 - Black - Backstitch with 3 strands
-  DMC 722 - Light Orange Spice - Backstitch with 6 strands
-  DMC 796 - Dark Royal Blue - Backstitch with 3 strands
-  DMC 964 - Light Seagreen or Mermaid Cardstock