



# You're A Lifesaver

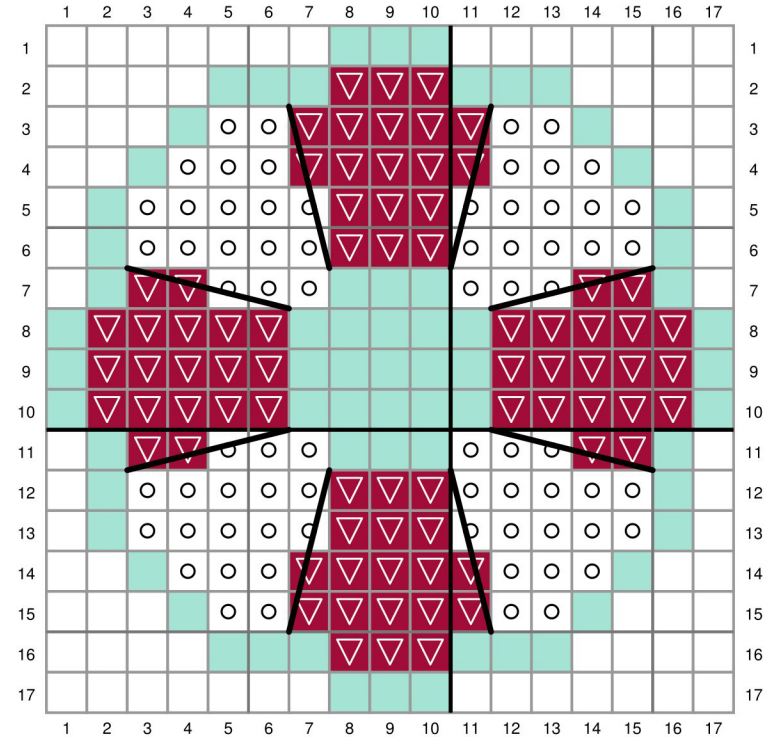
Pattern for Embroidery Hoop Lawn Cuts  
by Chari Moss



created for lawn fawn by chari moss

**Card Supplies Used:**

- Embroidery Hoop LF3093
- Embroidery Hoop Window and Frame Add-On LF3443
- Harold's ABCs LF317
- Stitched Rectangle Frames LF1142
- Stitched Wavy Backdrop: Portrait LF2890
- Giant Outlined Thanks LF3447
- Everyday Sentiment Banners LF1139
- Tide Pool Cardstock LF3338
- Blue Jay Cardstock LF1123
- Raspberry Cardstock LF1374
- Sparkle Cardstock - Pixie Dust LF1750
- Vellum LF1752
- Embossing Ink Pad LF1811
- White Embossing Powder LF1537
- Distress Ink - Uncharted Mariner
- White Watercolor splatters
- Iridescent Sequins



- No stitch
- DMC 304 - Medium Red
- DMC B5200 - Snow White
- DMC 310 - Black - Backstitch with 3 strands
- DMC 964 - Light Seagreen or Tide Pool Cardstock