



Egg-ceptional Egg

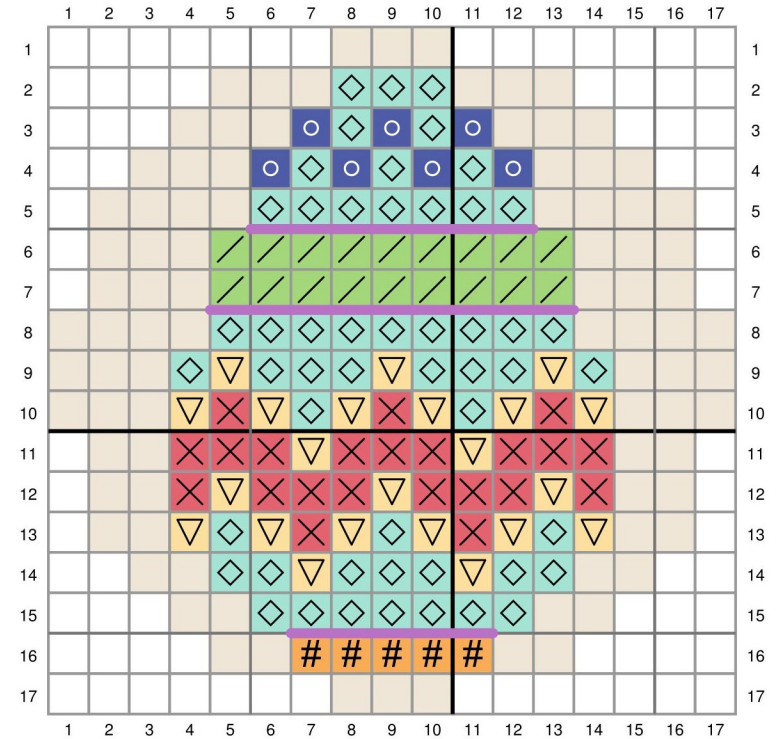
Pattern for Embroidery Hoop Lawn Cuts
by Chari Moss



created for lawn fawn by chari moss

Card Supplies Used:

- Embroidery Hoop LF3093
- Chirpy Chirp Chirp LF1046
- Chirpy Chirp Chirp Lawn Cuts LF1047
- Giant Happy Easter LF2801
- Outside In Stitched Rectangle Stackables LF1442
- Kraft Cardstock LF1747
- Mermaid Cardstock LF1121
- Peacock Cardstock LF1122
- Speckled Eggshell Cardstock LF2086
- Narwhal Cardstock LF1272
- Sparkle Cardstock - Grape LF3397
- What's Sewing On? - Satin Stitch paper LF3112



- No stitch
- DMC 3832 - Medium Raspberry
- DMC 3854 - Medium Autumn Gold
- DMC 3855 - Light Autumn Gold
- DMC 16 - Light Chartreuse
- DMC 964 - Light Seagreen
- DMC 798 - Dark Delft Blue
- DMC 209 - Dark Lavender - Long Backstitch with 6 strands
- DMC 3866 - Ultra Very Light Mocha or Speckled Eggshell cardstock