



# Honey Hive

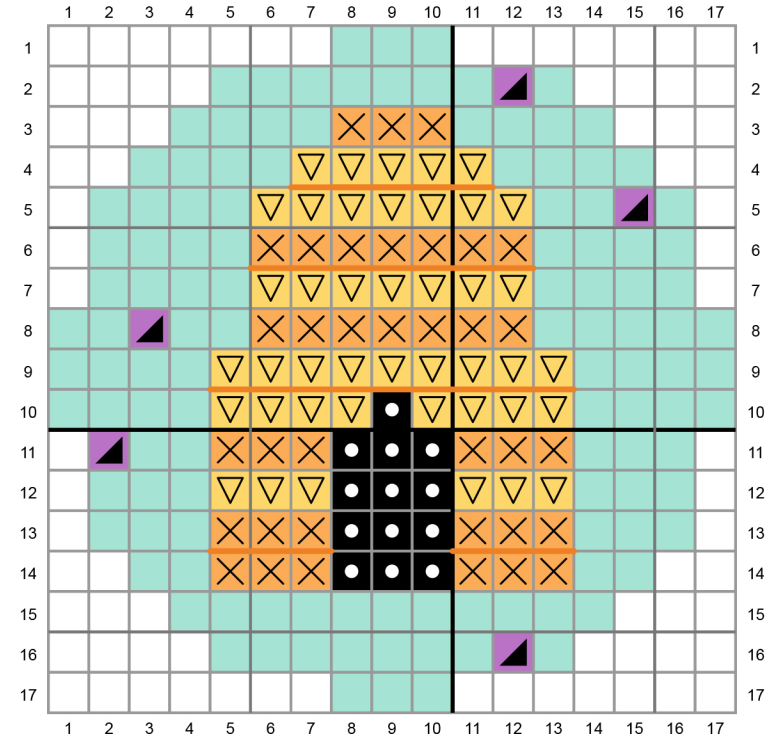
Pattern for Embroidery Hoop Lawn Cuts  
by Chari Moss



created for lawn fawn by chari moss

Card Supplies Used:

- Embroidery Hoop LF3093
- Honeycomb Backdrop LF3142
- Hive Five LF2927
- Scripty Sweet LF1268
- Spiffy Speckles - Ripe Banana LF1863
- Mermaid Cardstock LF1121
- Narwhal Cardstock LF1272
- Sugarplum Cardstock LF1124
- White Cardstock LF1753
- Distress Oxide Wild Honey LF2139
- Distress Oxide Rusty Hinge LF2128



- No stitch
- DMC 209 - Dark Lavender
- DMC 310 - Black
- DMC 743 - Medium Yellow
- DMC 3854 - Medium Autumn Gold
- DMC 3853 - Dark Autumn Gold - Backstitch with 4 strands
- DMC 964 - Light Seagreen or Mermaid cardstock